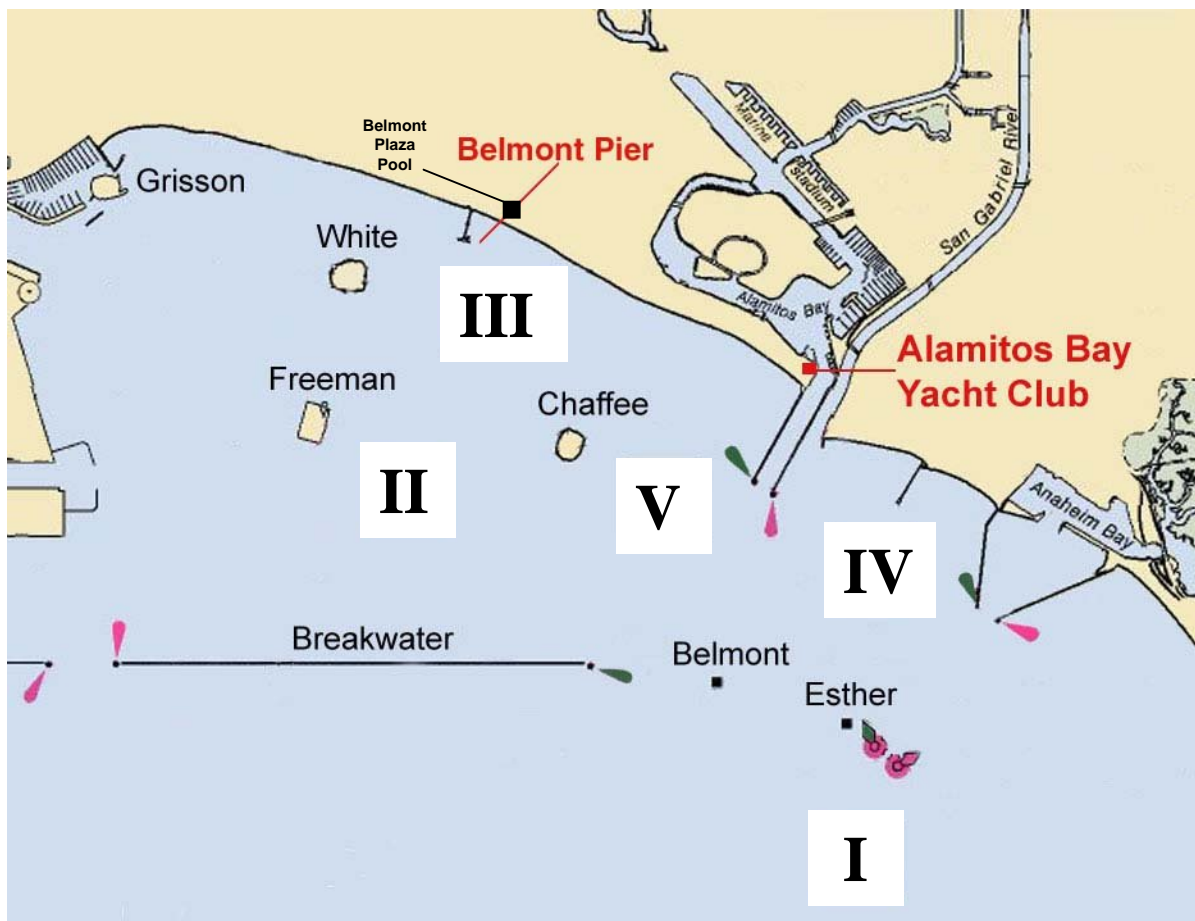


# 47th ANNUAL OLYMPIC CLASSES REGATTA

ALAMITOS BAY YACHT CLUB

APPENDIX 1



**RACING AREA I:** 1.3 nautical miles bearing 165° magnetic from the mouth of the Alamos Bay Jetty.

**RACING AREA II:** 1.5 nautical miles bearing 250° magnetic from the mouth of the Alamos Bay Jetty (inside the Federal Breakwater).

**RACING AREA III:** 100 yards east of the Belmont Pier (inside the Federal Breakwater).

**RACING AREA IV:** One-half (.05) nautical mile bearing 100° magnetic from the mouth of the Alamos Bay Jetty.

**RACING AREA V:** 100 yards west of the mouth of the Alamos Bay Jetty.